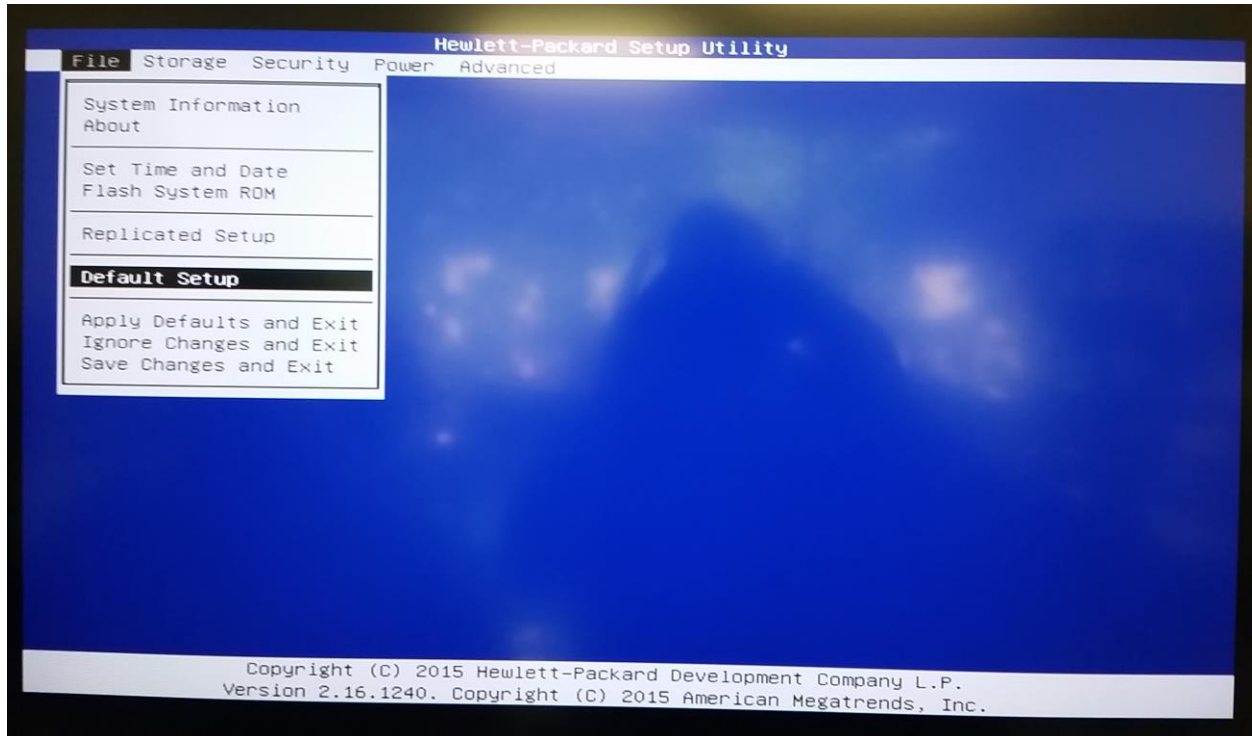


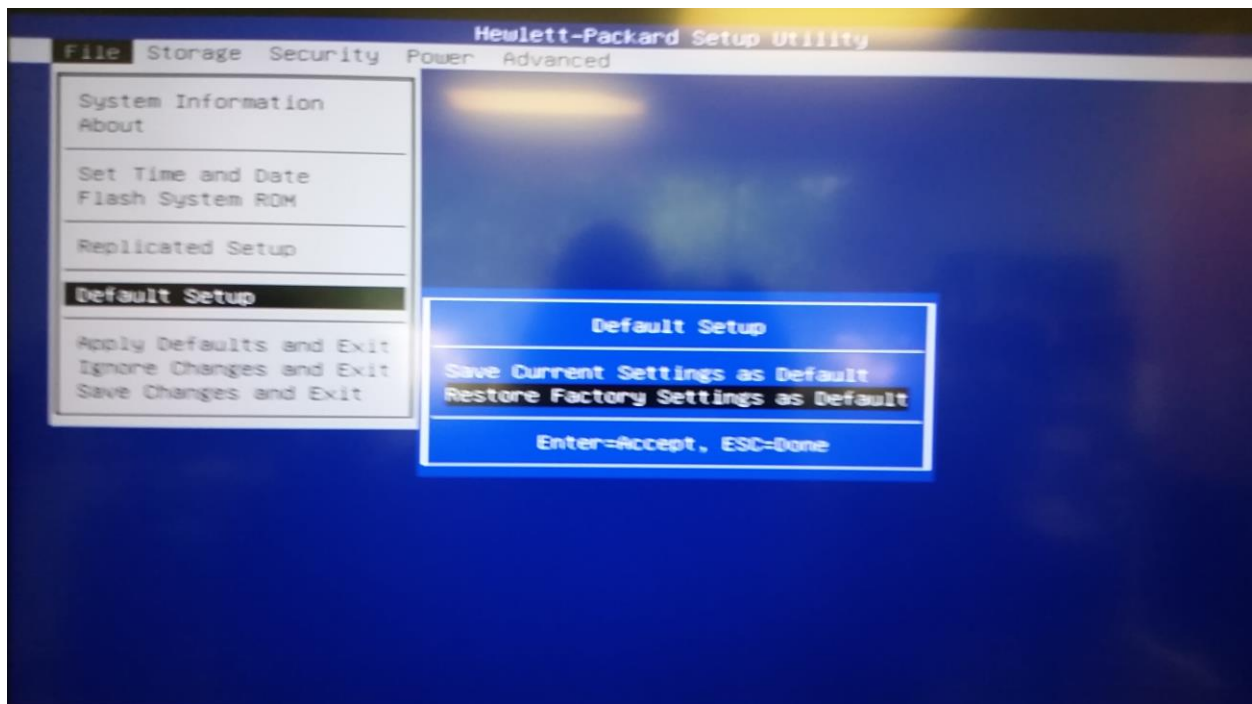
Angry Birds bios set up

Press F10 during the boot sequence to access the system BIOS

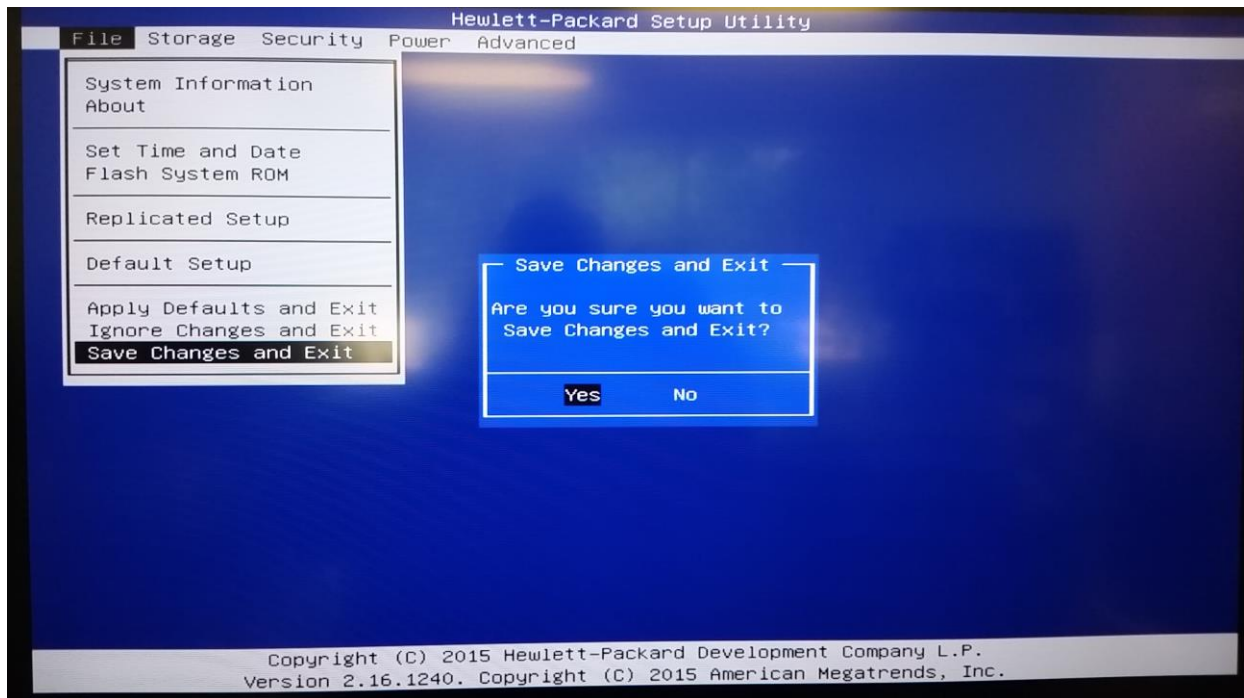
Use the arrow keys to select default setup and press enter



Select restore settings as default and press enter

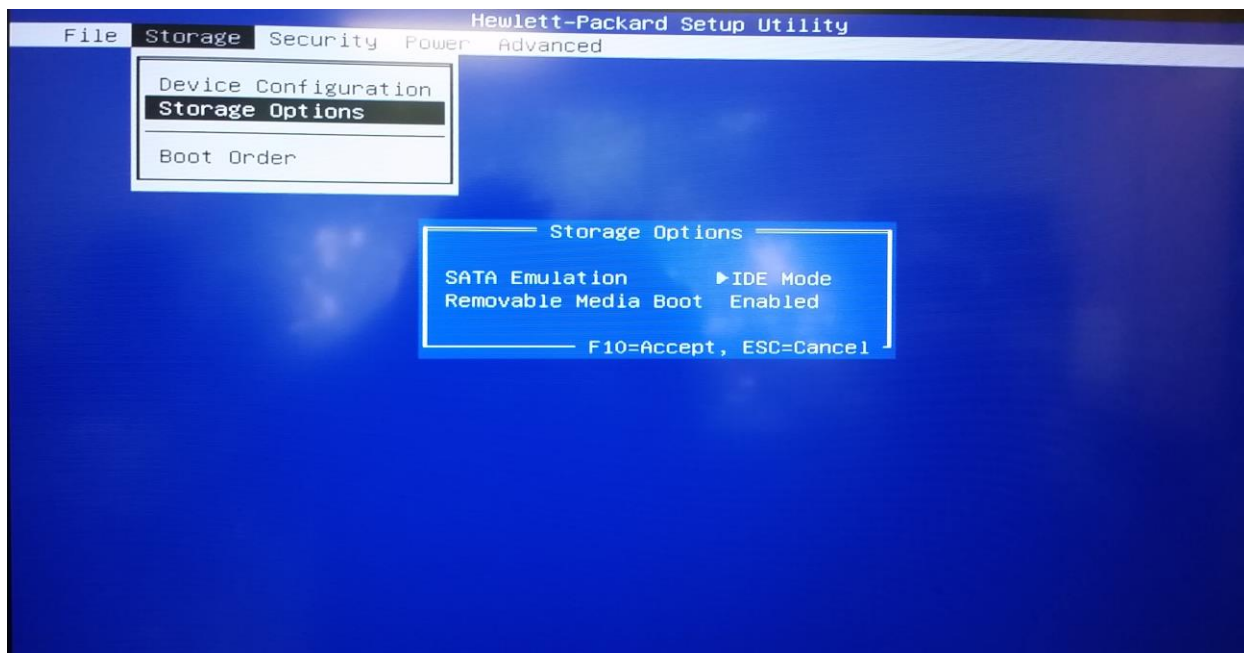


Select save changes and exit

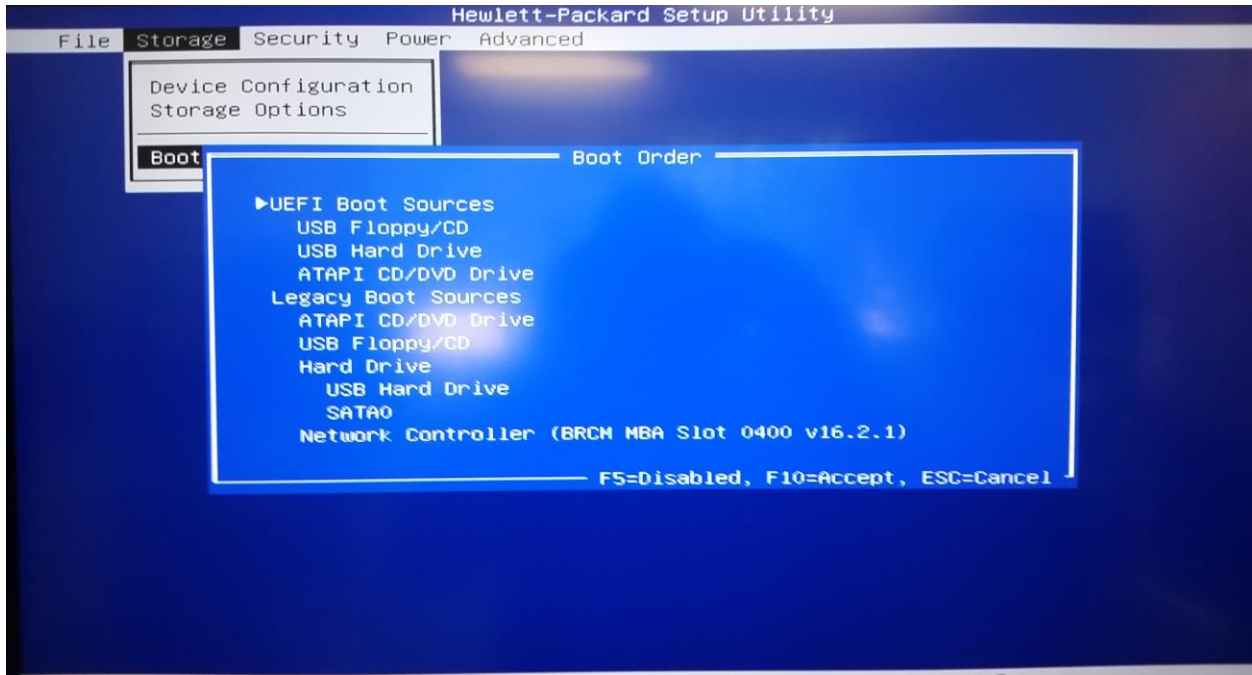


After reboot press F10 to reenter bios

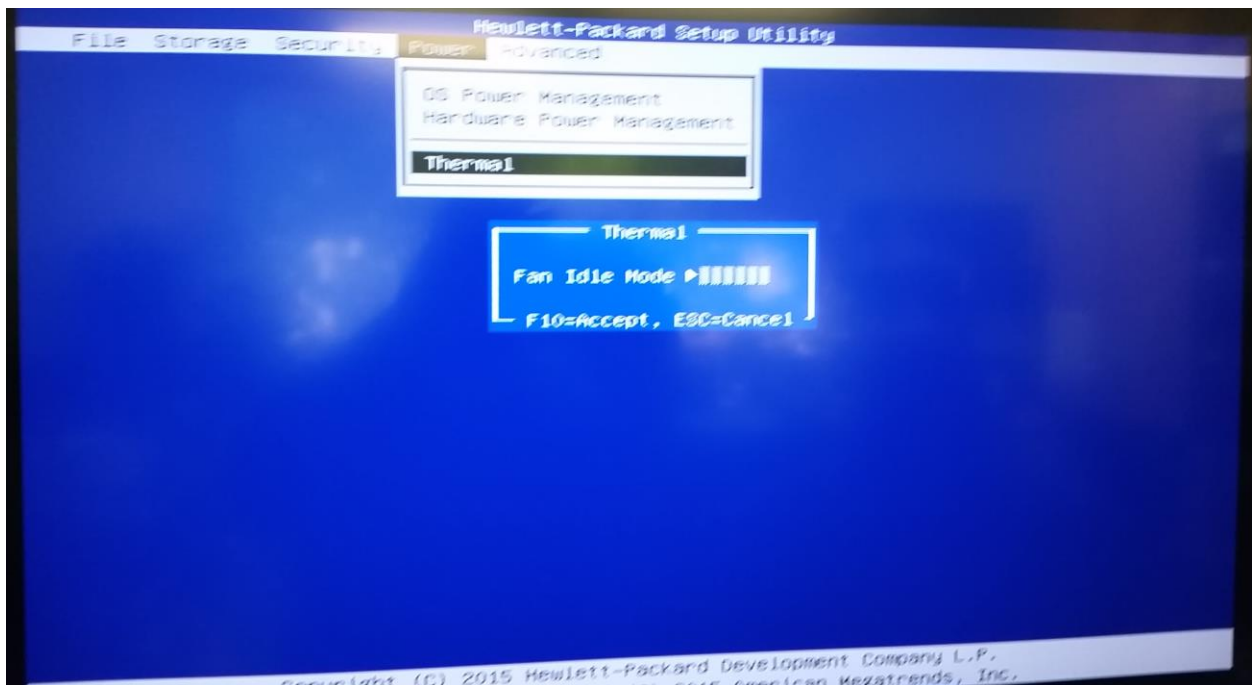
Select storage options and set SATA emulation to IDE mode and press F10 to accept



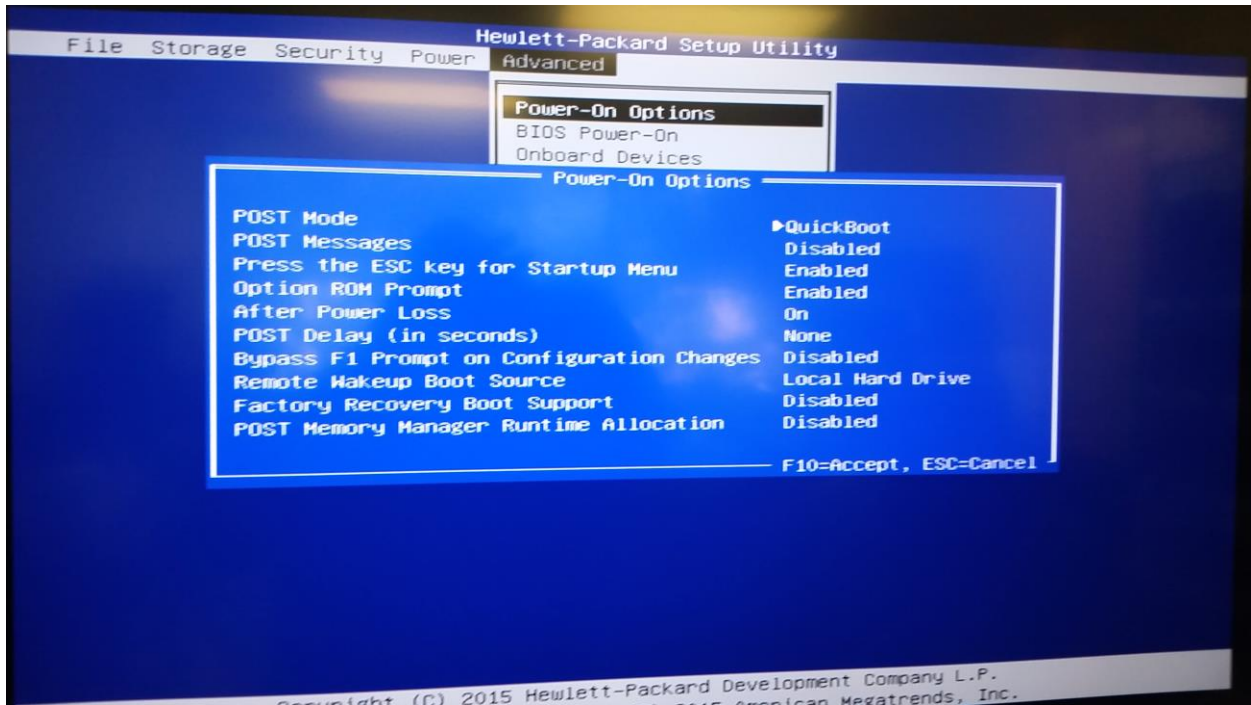
Select storage then boot order and set to match the picture below



Select power, then thermal and set fan idle mode to max using the arrow keys –then press F10 to accept



Select advanced then power on options, turn “after power loss” to on – press F10 to accept



Select file, save changes and exit, select yes and press enter to confirm

